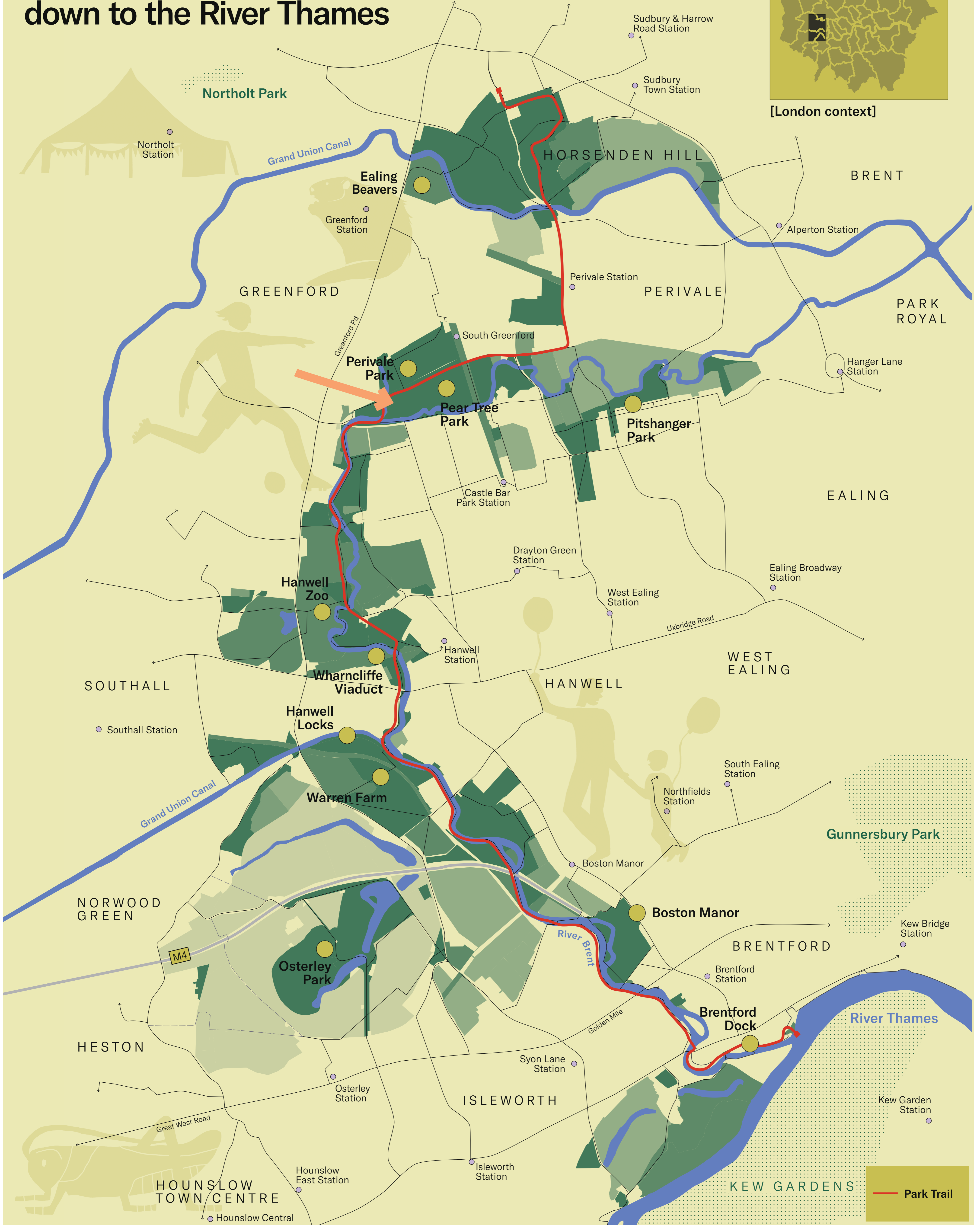


From the highest point in Ealing down to the River Thames



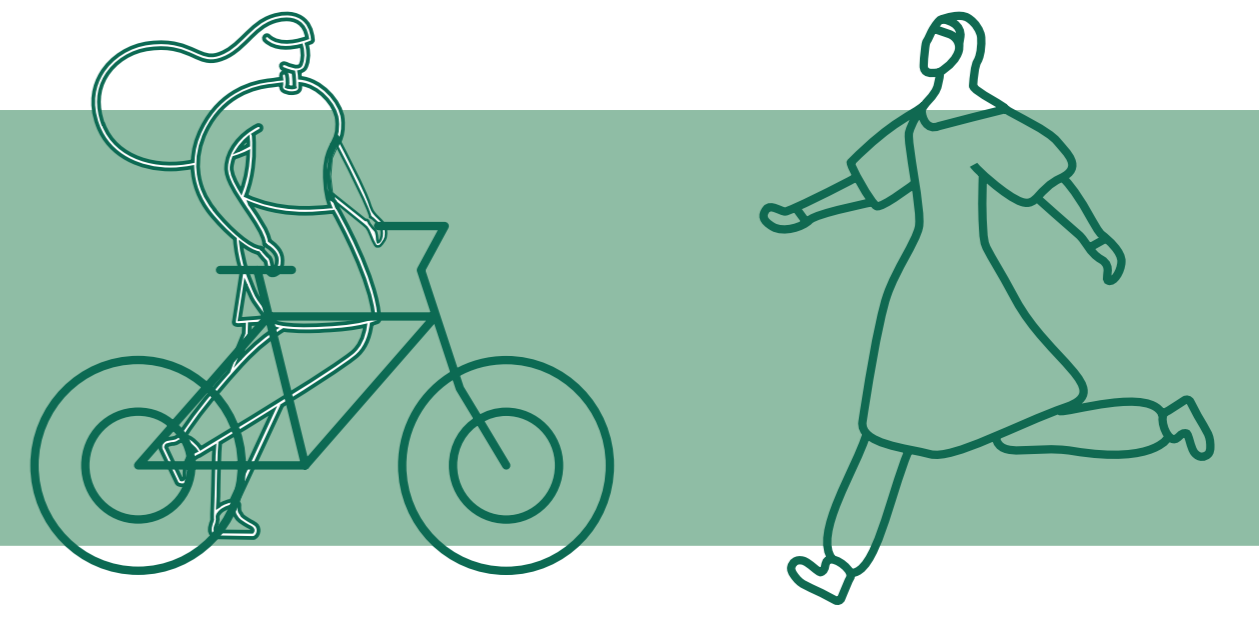
[London context]



Regional Park Overview presented at West London Regional Park Partnership Launch Event 02/03/2026
By Prior and Partners.



Proposals at Pear Tree Park



The Project

We are here today to talk to you about proposals for Pear Tree Park. Through the re-naturalisation of the River Brent floodplain, proposals are all about bringing forward biodiversity benefits and boosting the ecological value of Pear Tree Park, to create an exciting destination park space for the local area! As well as cleaning water that currently flows into Costons Brook and into the River Brent, we hope to improve access across the park through a new path network.

Have Your Say

Scan the QR code to share your comments.

Please tell us what you think!

Share with friends and neighbours.

This web link directs you to the official Pear Tree Park webpage:

<https://haveyoursay.ealing.gov.uk/en-GB/projects/pear-tree-park>



Aims of Project

- A greener, more attractive park setting for Ealing
- Objectives of Ealing's Biodiversity Action Plan (BAP)
- Better health and wellbeing for local residents
- Improve water quality and renaturalise the River Brent floodplain
- Support climate and ecology goals
- Boost active travel and connectivity across the local area

Design Team

Client Team:



Landscape Architect:

Levitt Bernstein
People.Design

Civil Engineers:

EGY

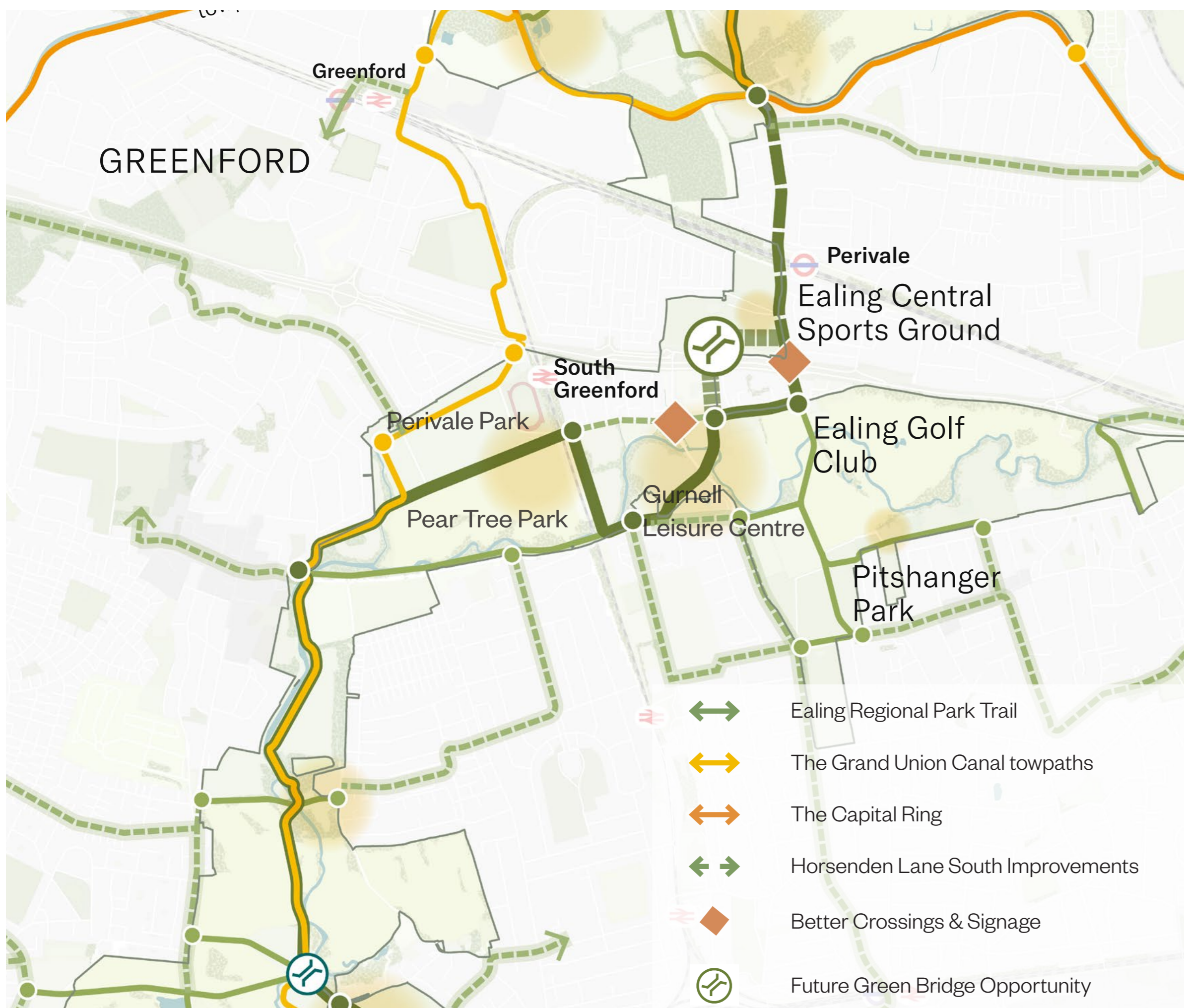
Wetland Consultant:

Salix

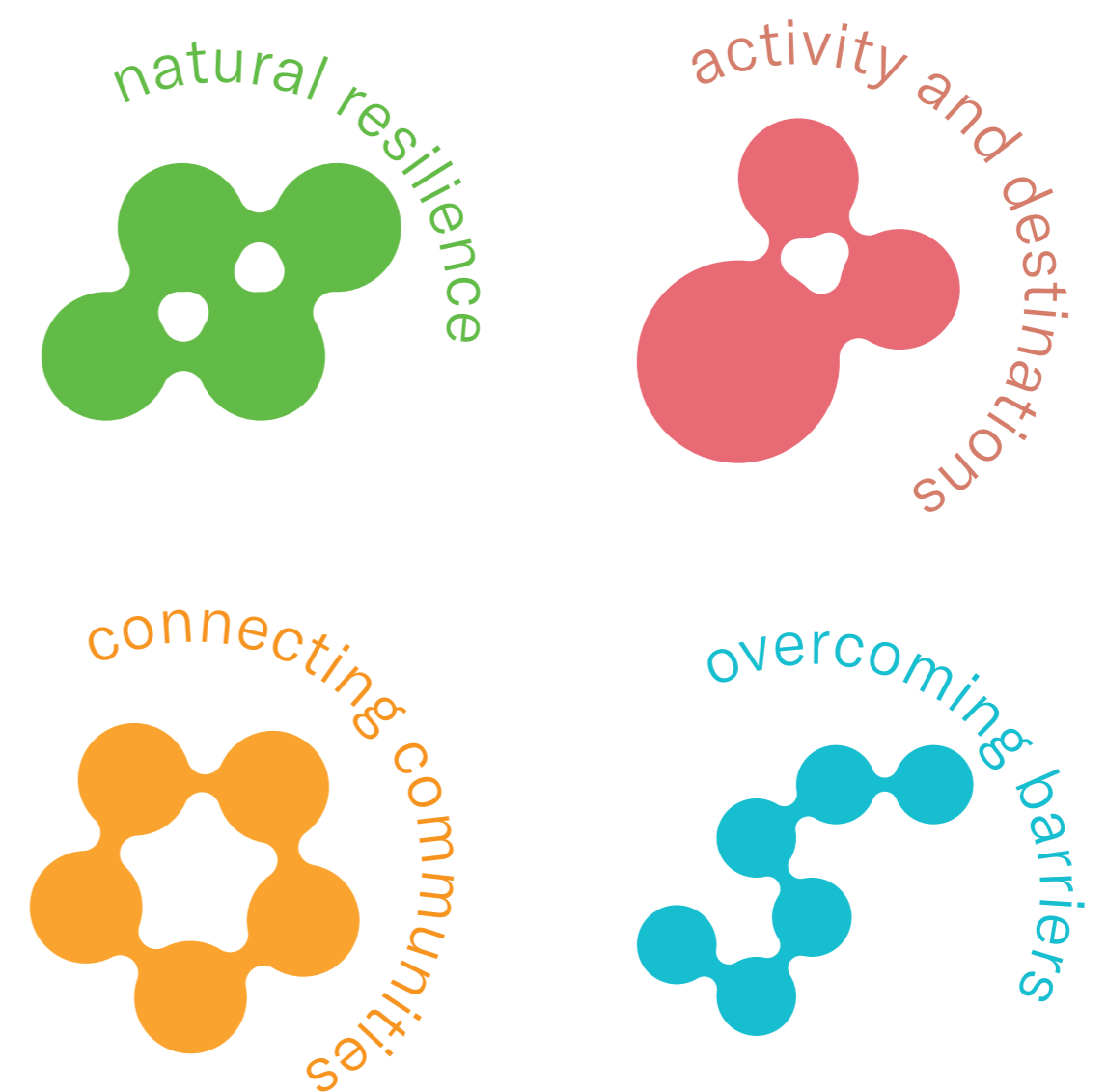
Ecologist:

Greengage

West London Regional Park Trail

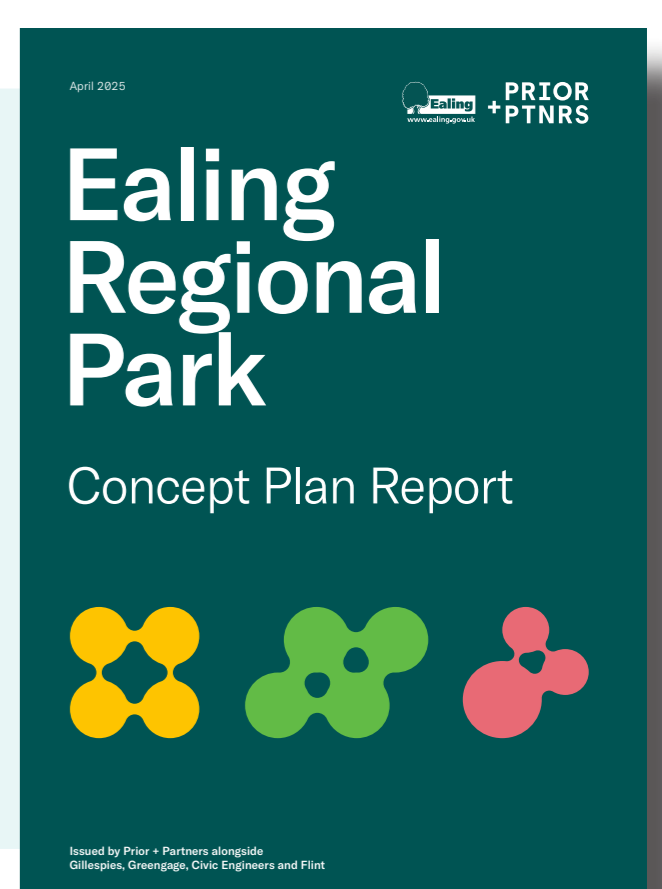


Movement strategy, Source: Ealing Regional Park Concept Plan Report by Prior + Partners, Gillespies, Greengage, Civic Engineers, and Flint



Ealing Regional Park: Concept Plan

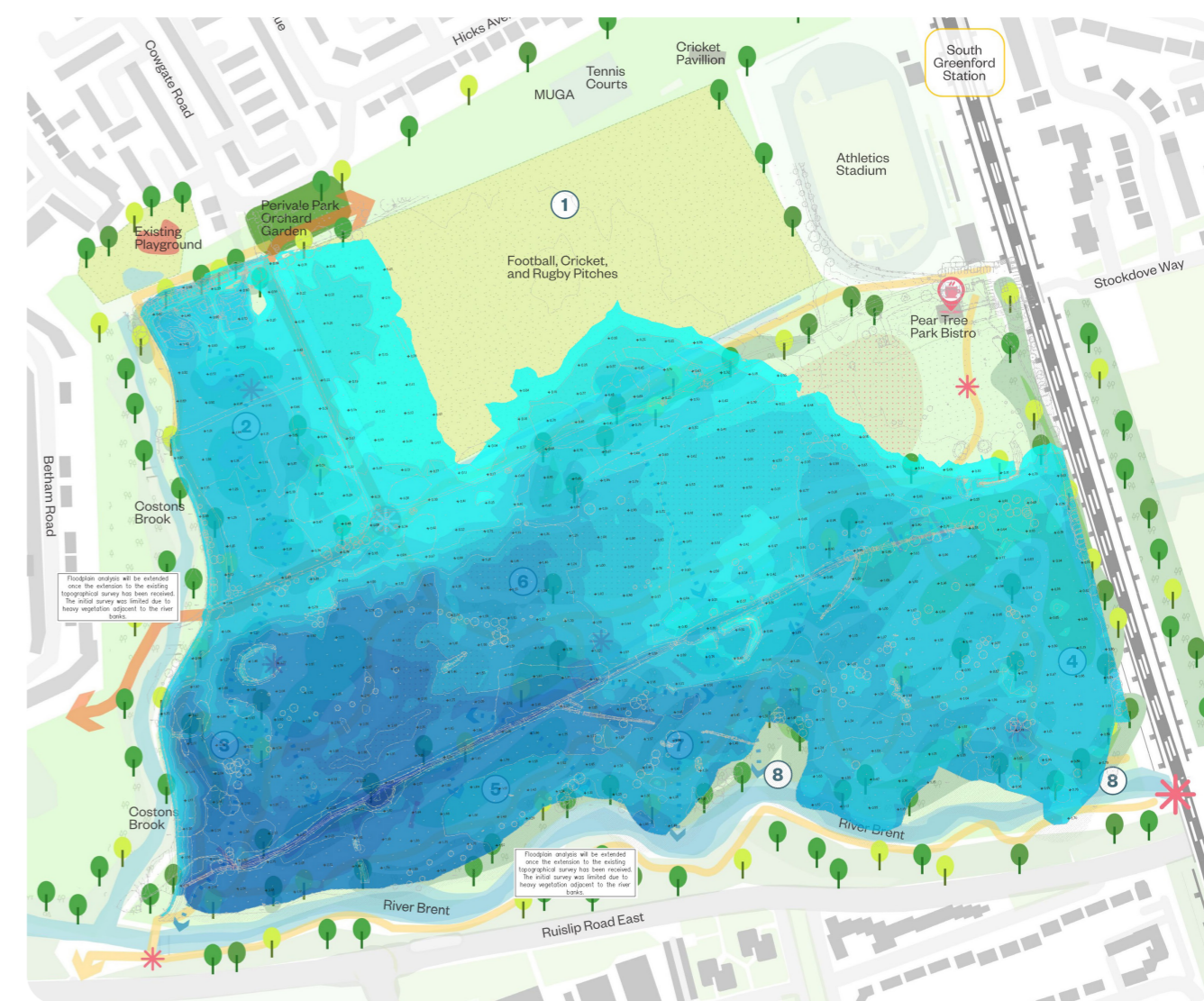
The Ealing Regional Park Concept Plan (April 2025), commissioned by Ealing Council, outlines a long-term vision for a connected regional park network in West London, centred on the River Brent and Horsenden Hill.



Pear Tree Park Today



Image Location Plan (Not to Scale)



Extent of 1 in 100 Year +20% Climate Change Flood Event within the Parks (Not to Scale)

- Former golf course use comprises long stretches of fairway with thin tree belts
- Limited interaction with the River Brent
- Lack of formal path network
- Parks sit within the River Brent floodplain: opportunity to create diverse wetland habitat



Drone photography by Salix River & Wetland Services Ltd (December 2025)

Landscape Principles



Proposed Landscape and Wetland Strategy

- ① Daylighting existing Thames Water surface water sewer into Perivale Park
- ② Series of wetland interventions to slow the movement of water from existing ponds to the North in Perivale Park
- ③ Additional ditches to south of sports pitches are linked via swales to the existing ditch running East-West across Pear Tree Park
- ④ Grassland meadow and pockets of existing trees with opportunity for strategic woodland planting

- ⑤ Floodplain meadow aligned around locations of existing trees.
- ⑥ Area for floodplain activation, with bank lowering to the River Brent, in-channel improvements, and opening out the main low-level ditch running E-W through Pear Tree Park
- ⑦ Potential areas for backwater encourage sediment deposits from the River Brent
- ⑧ Selective improvements such as tree thinning, tree canopy thinning, pollard or coppice

- ← West London Regional Park Trail
- ← Capital Ring
- Floodplain Activation
- Wetland Intervention / Wetland Meadow
- Grassland Meadow
- Woodland Planting
- Indicative Existing Trees. Refer to Tree Strategy.
- ← - - Indicative Movement of Water
- ✳ Landscape Intervention (Sculpture / Seating / Other)
- Check Dam / Leaky Dam
- ▭ Bridge Crossing

Landscape Character Areas

Series of Wetlands



Movement of water to clean Thames Water surface-water sewer



Playable character for exploration



Mini bridges and large boulder crossings



Grassland Meadow



Grassland meadow around mature trees



Sunny, open aspect allows for picnics and informal play



Paths threading through longer grasses



Wetland Meadow



Wetland meadow for marginal species



Drainage ditches allow for seasonal ponding & slow release of water

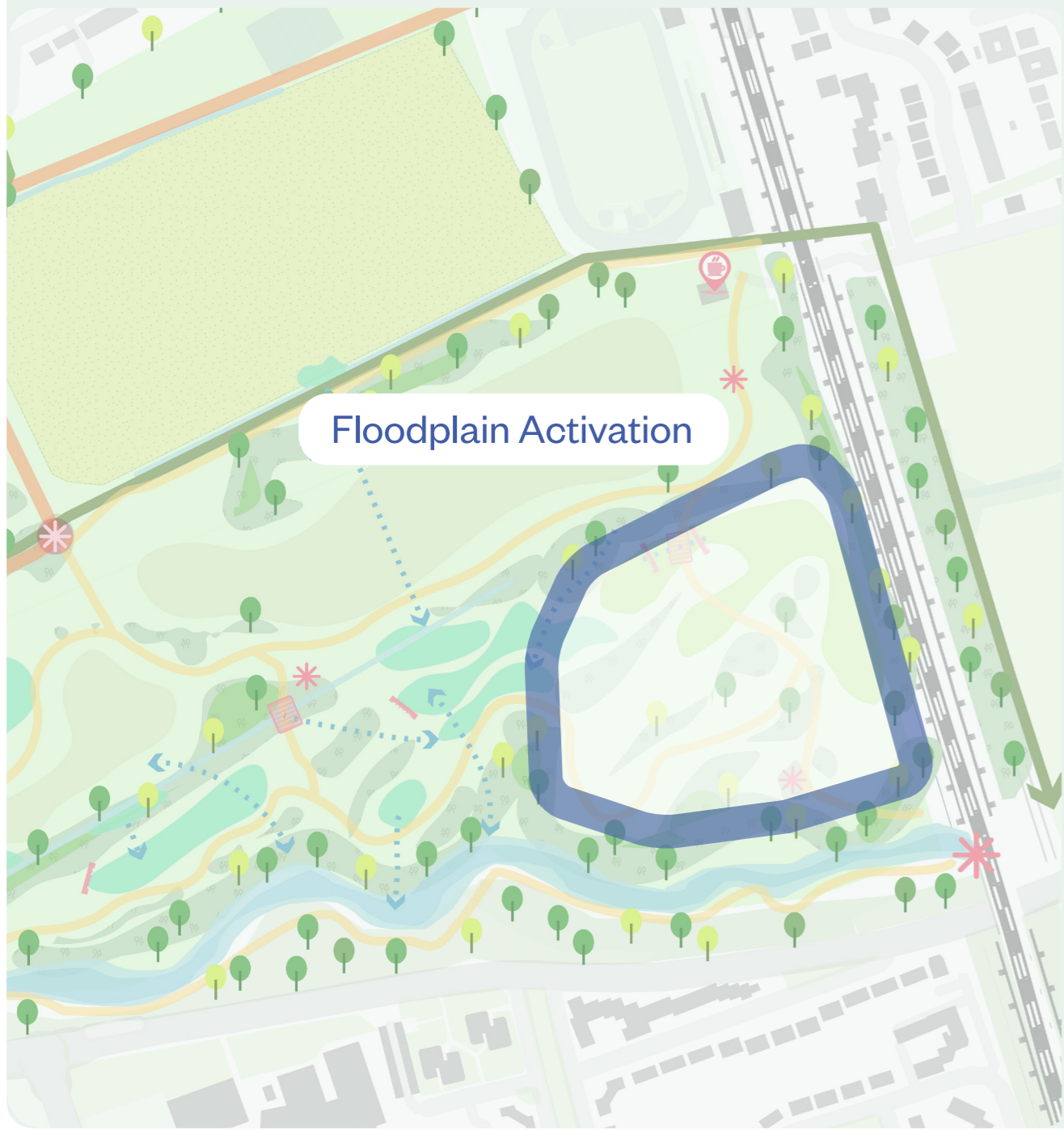


Occasional crossings and small bridges

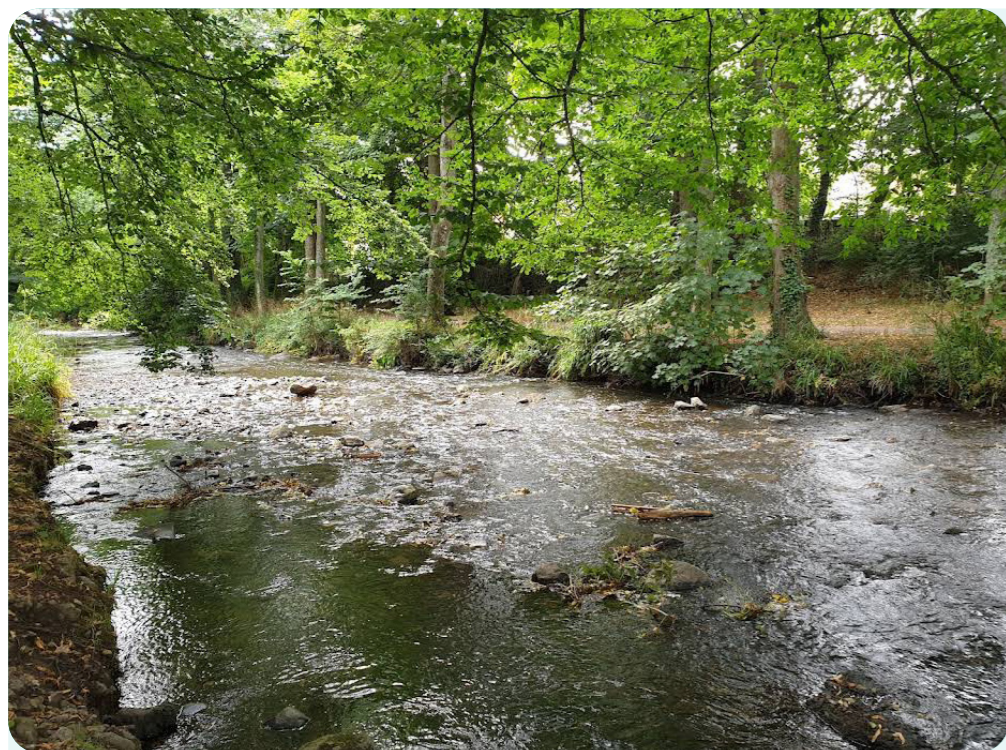
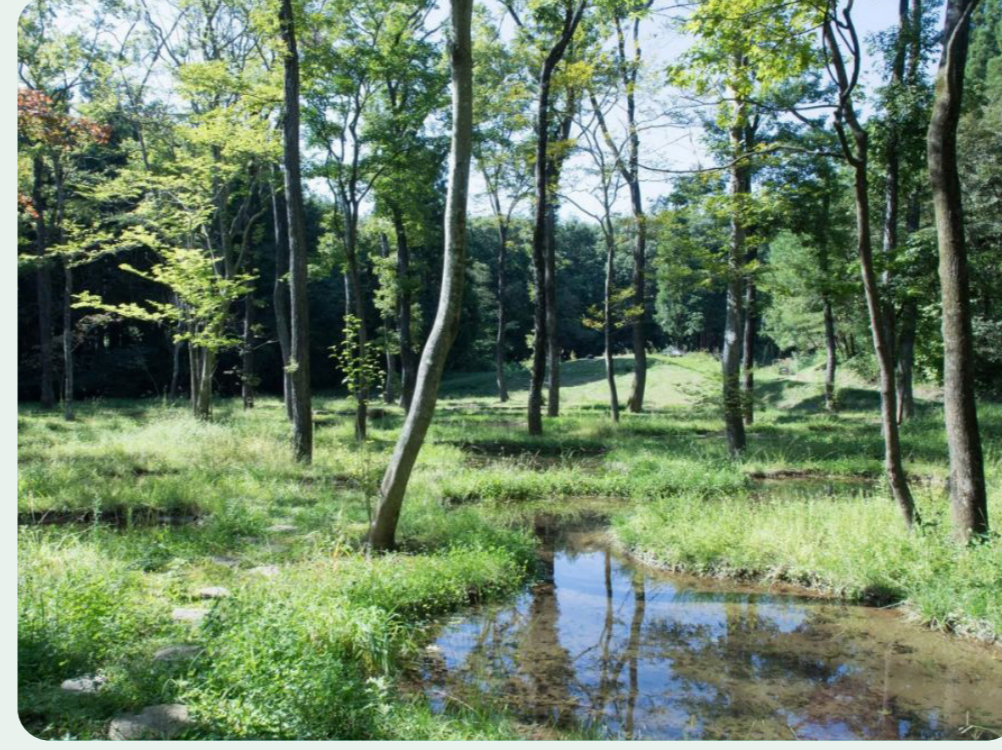


Landscape Character Areas

Floodplain Activation






-  Encouraging river water into Pear Tree Park
-  Naturalistic landscape character
-  Minimal hardscape interventions
Soft engineering and low-impact features



River Corridor






-  Marginal planting along the River Brent bank
-  'Daylighting' with selective tree management: removal, pollard or coppice
-  Seasonal access to the water's edge



Park Gateway



-  Transitional zone from car park and entrance
-  Grassland mounding helps define entrance to Pear Tree Park
-  Opportunity for additional orchard tree planting

